



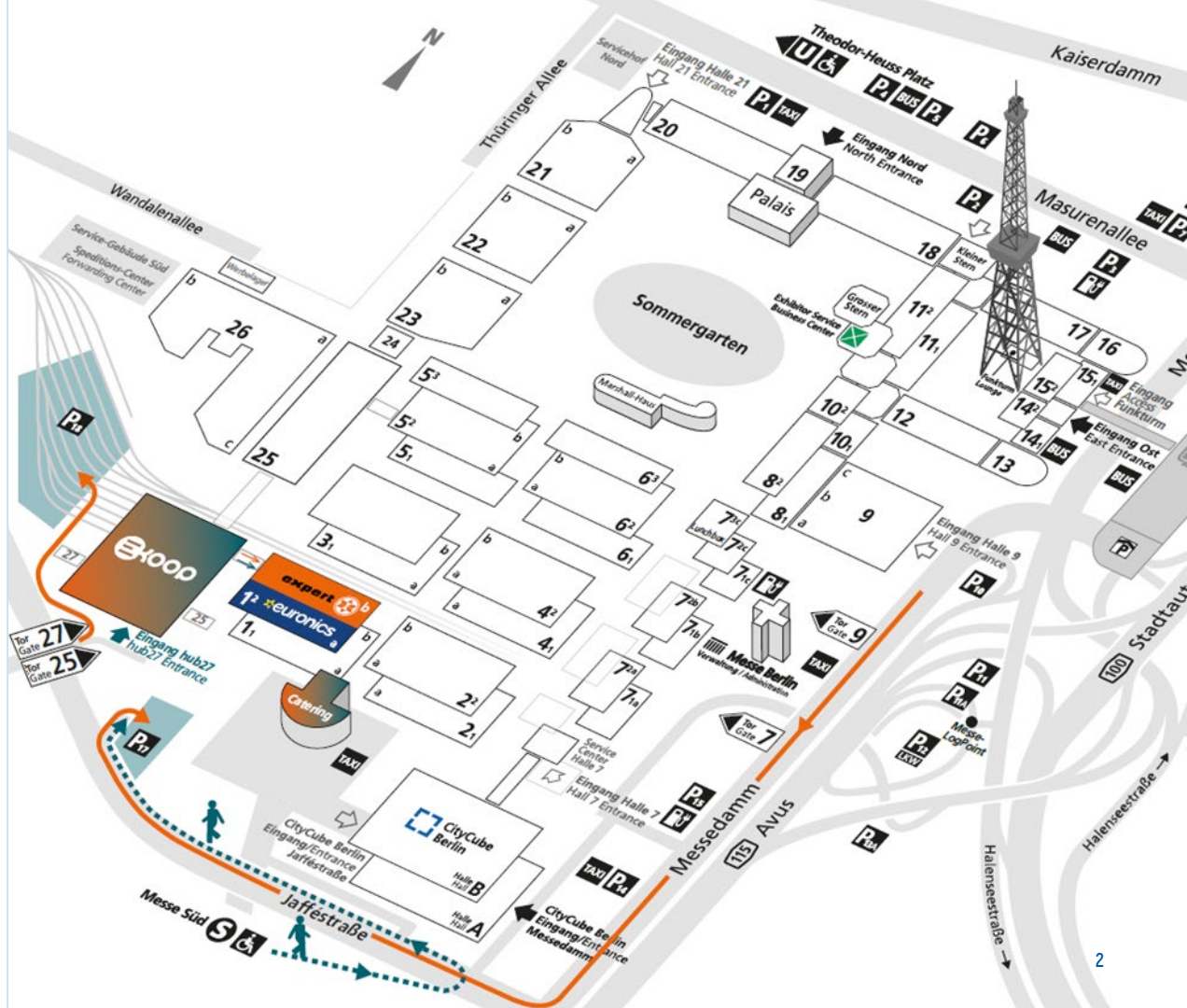
die messe der Kooperationen

**ADVERTISING &
SPONSORING
PORTFOLIO FOR
EXHIBITORS,
PARTNERS & SPONSORS**

BERLIN GERMANY
18-19 FEBRUARY 2024



BERLIN EXPOCENTER CITY KOOP SITE MAP 2024

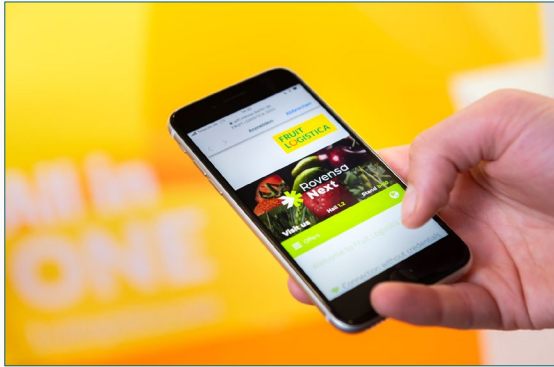


hub27

OUTDOOR & INDOOR ADVERTISING & SPONSORING



Sponsoring Packages



WiFi Sponsoring

KOOP will offer free WiFi all over the Exhibition Site for all visitors.

The sponsor benefits from different design options and features as well as integration/ naming in the on-site announcements of the KOOP WiFi.

A detailed overview of all benefits will be gladly provided anytime.

License: from 8,000.00 Euro net (depending on extent of the sponsorship)

Availability upon request.

Product Sponsoring – e.g. Coffee

Sponsor of e.g. Coffee Corners that will be strategically placed within the event site.

The sponsor benefits from different logo placements on/ at the coffee corners and/ or could deliver its own coffee machines or the like. There are different ways to be a sponsor and we we gladly compose the perfect package together with you.

License: on demand (depending on type and extent of the sponsorship)

Availability upon request. Other Product Sponsorships on demand.

hub27 – OUTDOORS



1 Advertising Tower at the Access to the Parking Areas, 4-sided

- Location** at the access to the parking areas of Entrance hub27 at "Jaffestraße"
- Size (w x h)** The tower is equipped with 4 banners:
east side (main road) & west side (main road): 8.75 m x 8.11 m per banner
north side (car park) & south side (main road): 5.75 m x 8.11 m per banner
- Hire Charge** east & west side: 7,660.00 EUR each
north & south side: 4,278.00 EUR each
- Production/ Installation** east side & west side: 4,015.00 EUR per banner
north side & south side: 2,665.00 EUR per banner
- Status** **Availability upon request.**



1 Advertising Tower at Gates 25/hub27, 2-sided

- Location** at the access to Gates 25/27 and hub27 at "Jaffestraße"
- Size (w x h)** 3.94 m x 9.25 m per side
(2 sides in total)
- Hire Charge** 7,355.00 EUR for both sides
- Production/ Installation** 3,805.00 EUR for both sides
- Status** **Availability upon request.**

hub27 – OUTDOORS



46 Flags between the Parking Areas and Gates 25/hub27

- Location** 46 flagpoles at Jaffestraße between the parking areas of Entrance South and the access to Gates 25/27
- Size (w x h)** 1.50 m x 4.00 m per flag
- Hire Charge** 175.00 EUR per flag
- Production/ Installation** The costs depend on layout, quantity and finishing of the flags and will therefore be calculated individually.
- Status** **Availability upon request.**

Mega-Banners on the facade of hub27 in combination with Organiser Content

- Location** banners on the facade of hub27 facing Main Road/ "Jaffestraße" and car park or Entrance South in combination with KOOP advertisement
- Size (w x h)** position 1: 19,60 x 5,75
positions 2 and 3: 8,60 x 5,75 per banner
position 4: 17,35 x 15,00
- Hire Charge** position 1: 10,480.00 EUR
positions 2 and 3: 4,600.00 EUR per banner
position 4: 24,205.00 EUR
- Production/ Installation** position 1: 5,630.00 EUR
positions 2 and 3: 4,700.00 EUR per banner
position 4: 12,910.00 EUR

- Status** **Availability upon request.**

hub27 – OUTDOORS



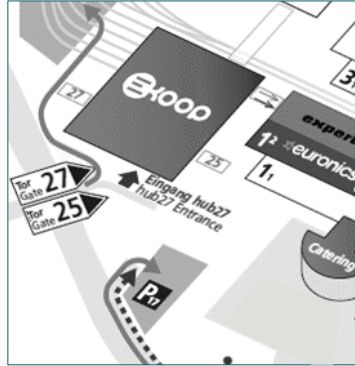
Floor Graphics

- Location** positions by arrangement:
e.g. in the entrance area of hub27
- Size (w x h)** 2.40 m x 2.40 m per graphic
Other formats/ shapes on demand.
- Hire Charge** 825.00 Euro per graphic
- Production/ Installation** 670.00 Euro per graphic
- Status** **Availability upon request.**

Mobile Advertising Towers, 4-sided

- Location** positions by arrangement:
e.g. in the entrance area of hub27
- Size (w x h)** e.g. small: 2.302 m x 4.15 m per side (see exemplary photo on the left)
e.g. big: 3.302 m x 6.15 m per side
(4 sides per tower – other formats are possible)
- Hire Charge** e.g. small: 3,890.00 EUR per tower
e.g. big: 7,780.00 EUR per tower
- Production/ Installation** e.g. small: 2,970.00 EUR per tower
e.g. big: 4,995.00 EUR per tower
- Status** **Availability upon request.**

hub27 – OUTDOORS



Pillar Brandings at the Entrance Area to hub27, each 4-sided

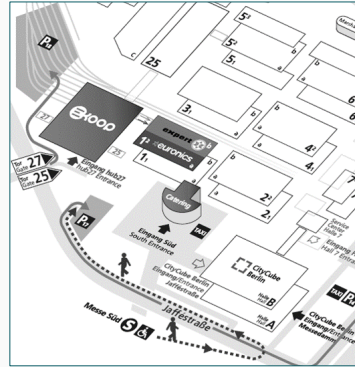
- Location** pillars side by side at the Entrance to hub27 (4 sides per pillar)
- Size (w x h)** complete version: 0.55 m x 4.10 m per side
short version: 0.55 m x 2.80 m per side (see exemplary photo on the left)
- Hire Charge** complete version: 1,065.00 EUR per 4-sided pillar branding
short version: 730.00 EUR per 4-sided pillar branding
- Production/Installation** complete version: 1,475.00 EUR per 4-sided pillar branding
short version: 1,375.00 EUR per 4-sided pillar branding
- Status** **Availability upon request.**



Bench Displays, 2-sided

- Location** positions by arrangement:
e.g. in the Entrance area of hub27
- Size (w x h)** 2.05 m x 2.05 m per side
(2 sides per display)
- Hire Charge** 780.00 EUR per 2-sided display
- Production/Installation** 405.00 EUR per 2-sided display
- Status** **Availability upon request**

hub27 – INDOORS



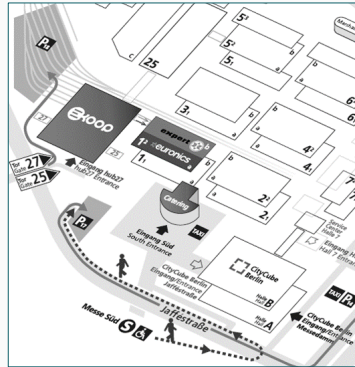
Logo on the Hall Overviews at the Exhibition-Site

Description Your Logo appears on each Hall Overview on site. There will approx. Be installed up to 6 overviews (see exemplary photo on the left). Max. 5 Logos will be integrated.

Size (w x h) On demand. Depending on Logo and finally booked logos. See Branding exemplary Branding area for up to 6 Logos on the left photo)

Branding License 150.00 EUR for up to 6 hall overviews i.e. 6 Logo integrations

Status Availability upon request.



Wardrobe Branding in the hub 27 Entrance Foyer

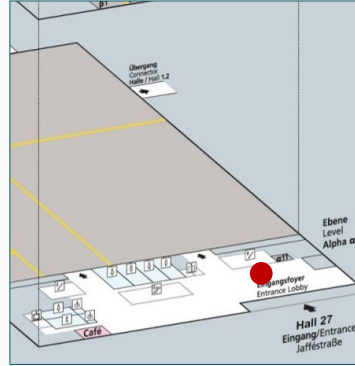
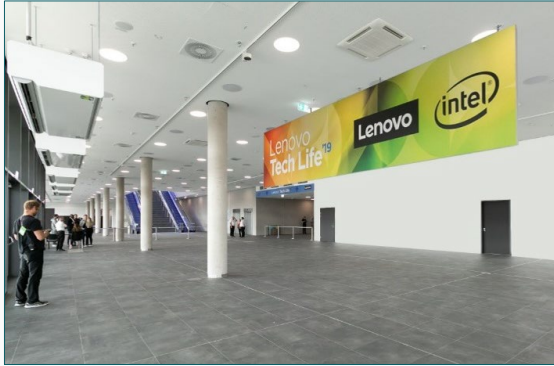
Location Branding of the wardrobe counters in the hub27 Entrance Foyer (see exemplary marked areas on the left photo)

Size (w x h) e.g. approx. 1.50 m x 0.70 m (w x h) per Branding

Branding License Upon request - depending on extend of the branding

Status Availability upon request.

hub27 – INDOORS



Hanging Banners in the Entrance Foyer, each 2-sided

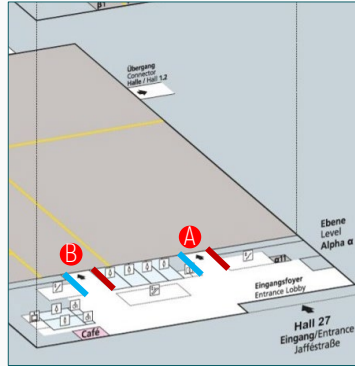
Location e.g. in the Entrance Foyer in front of the entrance/ exit doors
Other positions and formats are possible.

Size (w x h) e.g. 9.45 m x 2.00 m per double-sided banner
(print on front and back side)

Hire Charge e.g. 6,290.00 EUR per double-sided banner

Production/ Installation e.g. 2,520.00 EUR per double-sided banner

Status Availability upon request.



2 Entrance Banners to the Event Hall

Location banners on the walls next to the entrances to the Event Hall – Alpha Level:
2 entrances (see A and B) with 2 banners each.

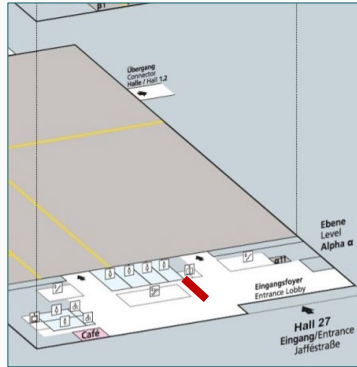
Size (w x h) left banners: 5.00 m x 3.10 m (see blue marks on the left)
right banners: 6.50 m x 3.10 m (see red marks on the left)

Hire Charge left banner: 1,998.00 EUR
right banner: 3,091.00 EUR

Production/ Installation left banner: 1,450.00 EUR
right banner: 1,970.00 EUR

Status Availability upon request.

hub27 – INDOORS



Hanging Banner in the Entrance Foyer ,2-sided

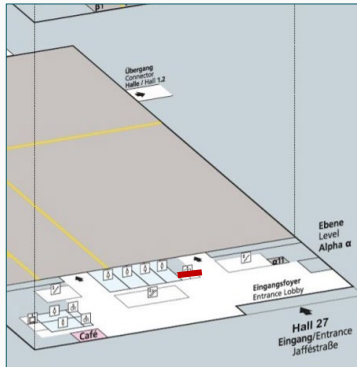
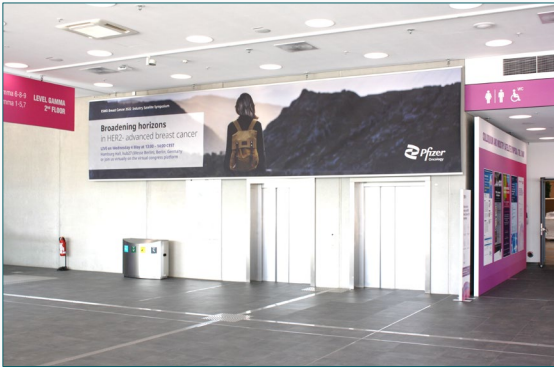
Location in the Entrance Foyer of hub27 in front of the escalators and stairs, 2-sided

Size (w x h) 7.00 m x 0.992 m per double-sided banner (print on front and back side)

Hire Charge e.g. 2,525.00 EUR per double-sided banner

Production/ Installation e.g. 1,750.00 EUR per double-sided banner

Status Availability upon request.



Hanging Banners in the Entrance Foyer, 1-sided

Location e.g. in the Entrance Foyer next to the elevator and the right entrance to the event hall

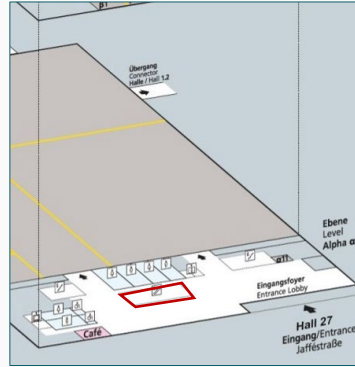
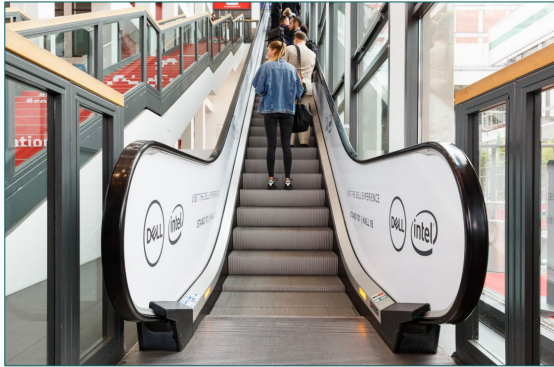
Size (w x h) e.g. 9.40 m x 1.90 m
Other positions and formats are possible.

Hire Charge e.g. 3,415.00 EUR

Production/ Installation e.g. 2,055.00 EUR

Status Availability upon request.

hub27 – INDOORS



Balustrade Graphics at Escalators

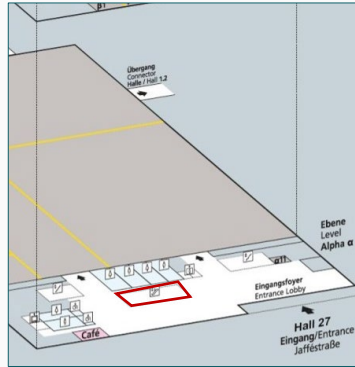
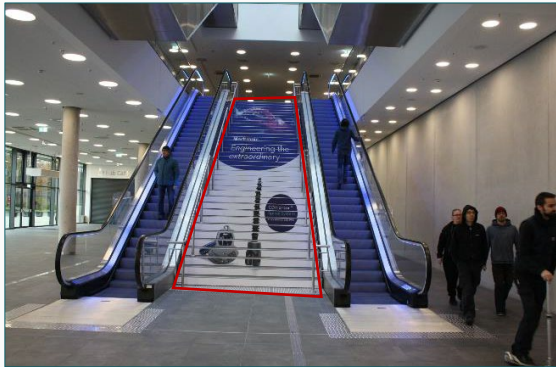
Location next to the stairs leading to level Beta from the entrance lobby

Size (w x h) approx. 50 m² per escalator, i.e. for 2 balustrades

Hire Charge 9.668,00 EUR per escalator, i.e. for 2 balustrades

Production/ Installation 4,470.00 EUR per escalator, i.e. for 2 balustrades

Status Availability upon request.



Stair Graphics on Steps

Location stairs leading from the entrance lobby up to level Beta

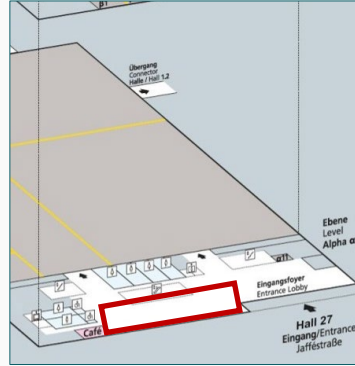
Size (w x h) 2,88 m x 0,145 m per step graphic
(37 steps in total)

Hire Charge 4,528.00 EUR for all 37 stair graphics

Production/ Installation 1,345.00 EUR for all 37 stair graphics

Status Availability upon request.

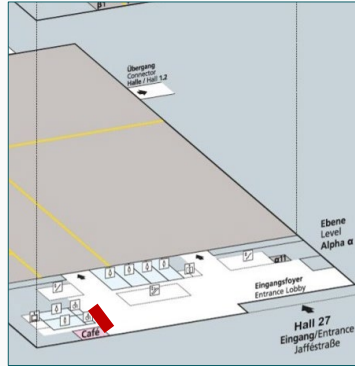
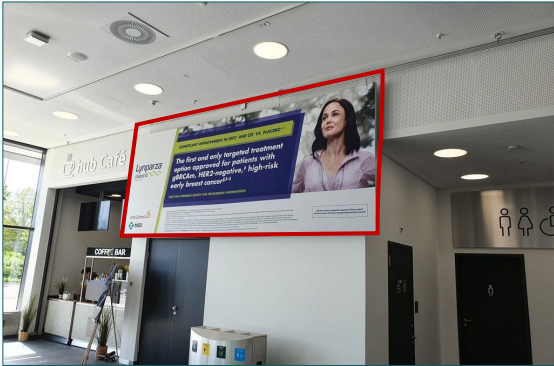
hub27 – INDOORS



8 Pillar Brandings, each 4-sided

Location	8 pillars side by side directly in the Entrance Foyer
Size (w x h)	complete version: 0.60 m x 4.10 m per side – (see exemplary left picture) short version: 0.60 m x 2.80 m per side
Hire Charge	complete version: 1,270.00 EUR per 4-sided pillar branding short version: 875.00 EUR per 4-sided pillar branding
Production/ Installation	complete version: 1,475.00 EUR per 4-sided pillar branding short version: 1,375.00 EUR per 4-sided pillar branding

Status Availability upon request.

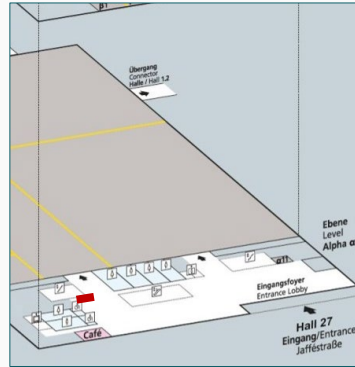


Banner next to the hub-Café

Location	in the entrance lobby of hub27 next to the hub-café entrance
Size (w x h)	approx. 4.75 m x 1.90 m
Hire Charge	1,975.00 EUR
Production/ Installation	1,210.00 EUR

Status Availability upon request.

hub27 – INDOORS



Banner next to the Event Hall on the left hand side

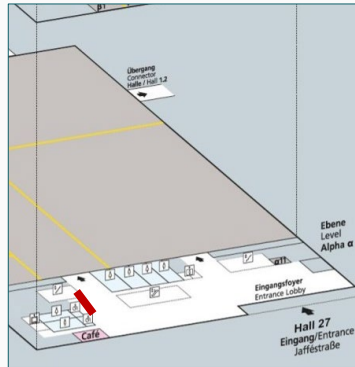
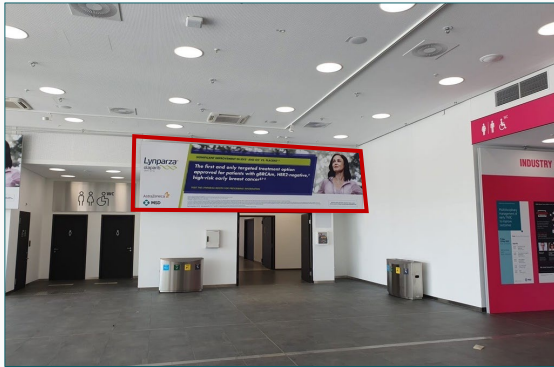
Location banner in the entrance lobby of hub27 beside the hall entrance on the left hand side

Size (w x h) approx. 5.20 m x 1.90 m

Hire Charge 2,160.00 EUR

Production/ Installation 1,210.00 EUR

Status Availability upon request.



Banner next to the Hall Entrance

Location in the entrance lobby of hub27 beside the hall entrance

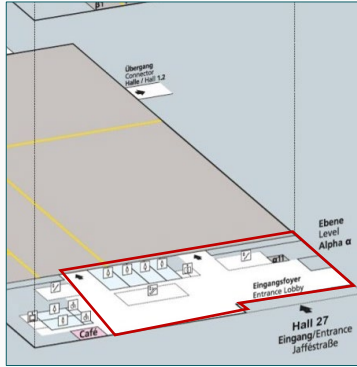
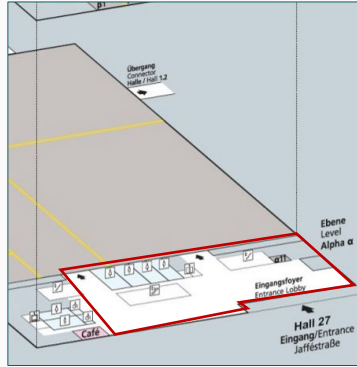
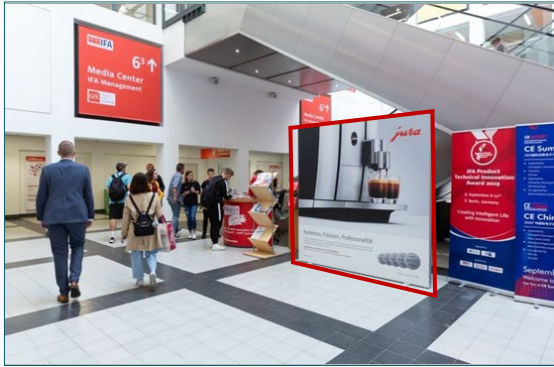
Size (w x h) approx. 6.70 m x 1.90 m

Hire Charge 2,785.00 EUR

Production/ Installation 1,560.00 EUR

Status Availability upon request.

hub27 – INDOORS



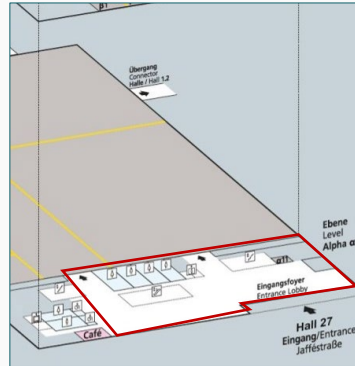
Large Display Frames in the Entrance Lobby, each 1-sided

- Location** in the Entrance Lobby – exact positions by arrangement
- Size (w x h)** 2.28 m x 2.28 m per banner
(1 banner per display)
- Hire Charge** 754.00 EUR per 1-sided display
- Production/ Installation** 530.00 EUR per 1-sided display
- Status** Availability upon request.

Floor Graphics (Indoors)

- Location** in the Entrance Lobby – exact positions by arrangement
- Size (w x h)** e.g. 1.00 m x 1.00 m per graphic
e.g. 2.00 m x 2.00 m per graphic
Special formats and carpet brandings on demand.
- Hire Charge** e.g. 152.00 EUR per graphic
e.g. 397.00 EUR per graphic
- Production/ Installation** e.g. 105.00 EUR per graphic
e.g. 335.00 EUR per graphic
- Status** Availability upon request.

hub27 – INDOORS



Display Frames in the Entrance Foyer, each 1- or 2-sided

Location in the Entrance Foyer: exact positions by arrangement

Size (w x h) 1.00 m x 2.00 m per display
(2 sides per display)

Hire Charge e.g. 580.00 EUR per 2-sided display

Production/ Installation e.g. 365.00 EUR per 2-sided display

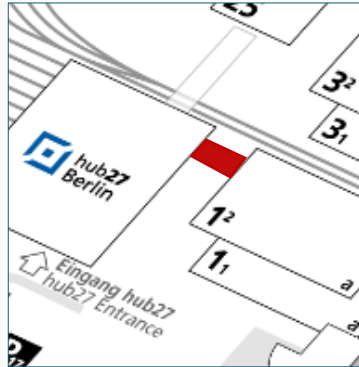
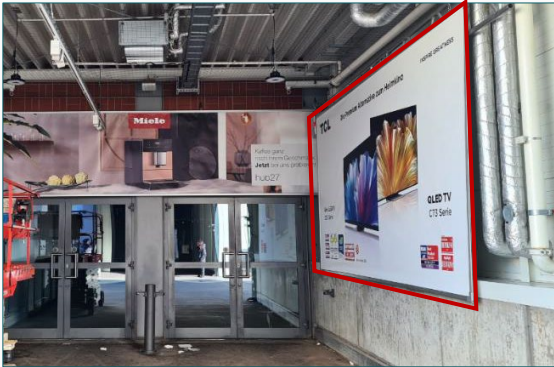
Status Availability upon request.

hub27 – INDOORS



Passageway Banners between hub27 and Hall 1.2

- Location** up to 3 passageway banners between hub27 and Hall 1.2, each 2-sided (see red mark on the left map)
- Size (w x h)** e.g. 6.05 m x 1.45 m per double-sided banner
other sizes and formats possible
- Hire Charge** e.g. 3,720.00 EUR per double-sided banner
- Production/Installation** e.g. 1,335.00 EUR per double-sided banner
- Status** **Availability upon request.**



Lateral Passageway Banners between hub27 and Hall 1.2

- Location** up to 8 lateral passageway banners between hub27 and Hall 1.2 (see red mark on the left map and photo)
- Size (w x h)** e.g. 5.00 m x 2.50 m
other sizes and formats are possible
- Hire Charge** e.g. 2,660.00 EUR per banner
- Production/Installation** e.g. 735.00 EUR per banner
- Status** **Availability upon request.**

hub27 – INDOORS



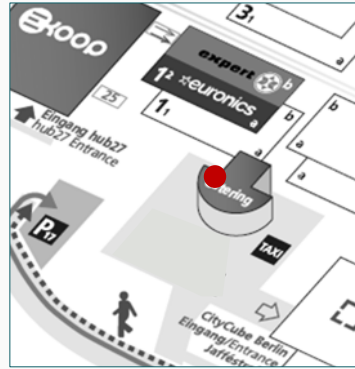
2 Entrance Banners between hub27 and Hall 1.2

Location	2 entrance banners at the entrances to hub27 and Hall 1.2, each 1-sided (see red marks on the left map)
Size (w x h)	Entrance banner Hall 1.2: 6.00 m x 1.10 m Entrance banner hub27: 6.50 m x 1.50m
Hire Charge	Entrance banner Hall 1.2: 1,400.00 EUR Entrance banner hub27: 2,067.00 EUR
Production/ Installation	Entrance banner Hall 1.2: 920.00 EUR Entrance banner hub27: 735.00 EUR
Status	Availability upon request.

ENTRANCE SOUTH CATERING AND PASSAGEWAY ADVERTISING

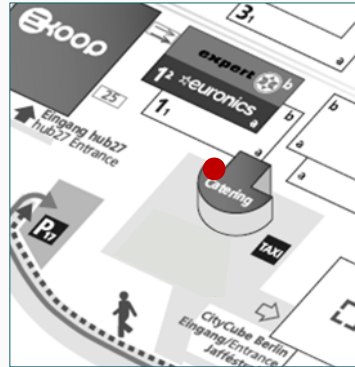
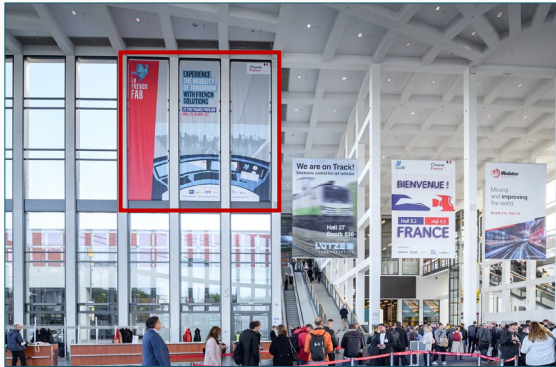


CATERING AREA – INDOORS



Option A: 1 Window Branding in the Catering Area on the left side

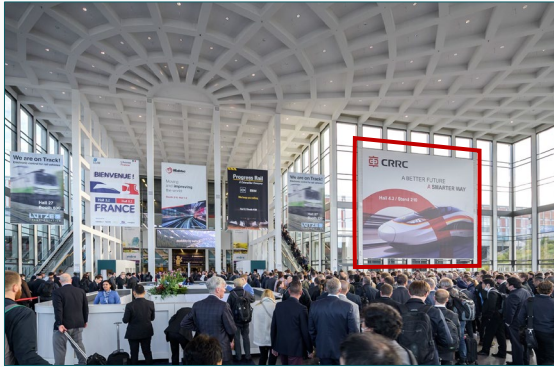
- Location** 1 mega-banner in the Catering Area on the left hand side (see red mark on the left photo)
- Size (w x h)** 14.50 m x 11.70 m
- Hire Charge** 16,105.00 EUR
- Production/ Installation** 10,270.00 EUR
- Status** Availability upon request.



Option B: Window Brandings in the Catering Area on the left side

- Location** a minimum of 3 window banners in the Catering Area on the left hand side
- Size (w x h)** 2.33 m x 8.25 m per banner (a minimum of 3 banners in total) Other formats are possible.
- Hire Charge** 5,470.00 EUR for 3 window banners
- Production/ Installation** 4,365.00 EUR for 3 window banners
- Status** Availability upon request.

CATERING AREA – INDOORS



Option A: 1 Window Branding in the Catering Area on the right side

Location 1 mega-banner in the Catering Area on the right hand side
(see red mark on the left photo)

Size (w x h) 14.50 m x 11.70 m

Hire Charge 16,105.00 EUR

Production/ Installation 10,270.00 EUR

Status Availability upon request.



Option B: Window Brandings in the Catering Area on the right side

Location a minimum of 3 window banners in the Catering Area on the right hand side

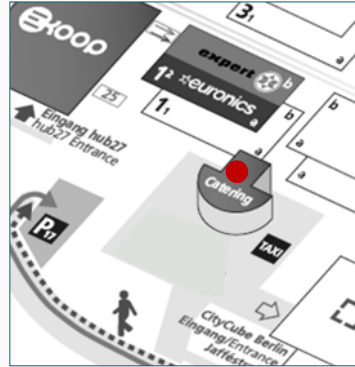
Size (w x h) 2.33 m x 8.25 m per banner (a minimum of 3 banners in total)
Other formats are possible.

Hire Charge 5,470.00 EUR for 3 window banners

Production/ Installation 4,365.00 EUR for 3 window banners

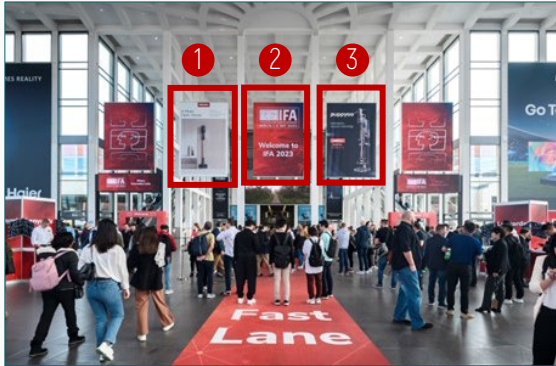
Status Availability upon request.

CATERING AREA – INDOORS

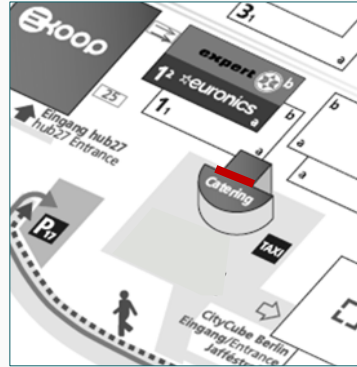


3 Mega-Banners in the Catering Area, each 2-sided

Location	in the Catering Area next to the escalators and stairs leading to the Retailers Hall level
Size (w x h)	4.00 m x 6.00 m per double-sided banner (print on front and back side)
Hire Charge	3,455.00 EUR per double-sided banner
Production/Installation	2,875.00 EUR per double-sided banner
Status	Availability upon request.

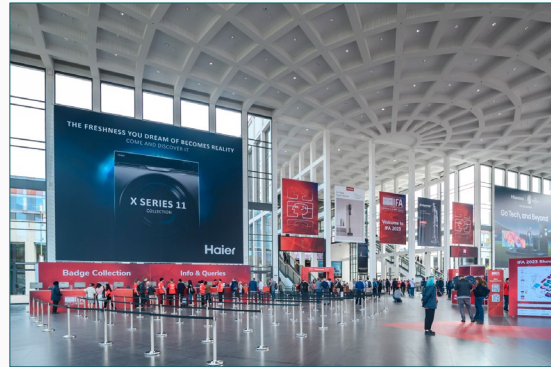


CATERING AREA – INDOORS

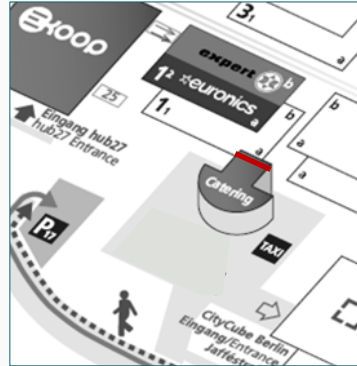
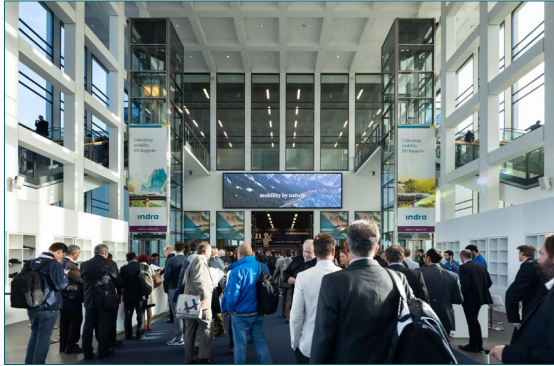


LED Displays with banner above the Escalators

- Location** 2 combi-packages are available. Each package consists of 1 double-sided mega-banner in combination with a new 1-sided LED display in the catering area at the outer sides left and right directly above the escalators
- Size (w x h)** Mega-banners, 2-sided: max. 4.00 m x 5.70 m per double-sided banner
LED displays, 1-sided: FULL-HD display/ 2.5 mm pixel pitch 20 MBit/ 60 fps/ content 32:9 LED dimensions: 4.86 m x 1.36 m each; resolution: 3840 x 1080 pixel each
- Technical Specs**
- Special Combi Price** 7,630.00 EUR per combi-pack incl. a 30 sec. spot within a loop with organizer content on the LED display and hire charge, production & installation of the banner installed above
- Status** Availability upon request

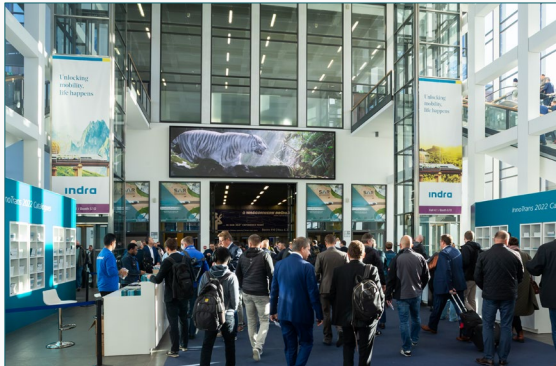


CATERING AREA – INDOORS

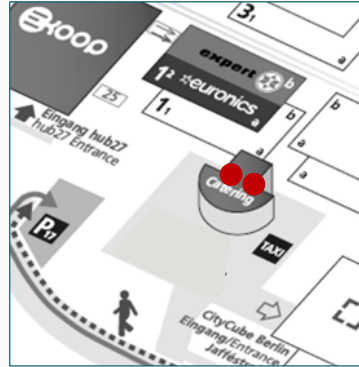


1 Exclusive LED Mega-Display in the Catering Area

- Location** spread your message to the world in an innovative way with our LED Mega-Display in the Catering Hall
- Technical Specs** FULL-HD display / 2.50 mm pixel pitch
20 MBit / 60 fps/ content 32.9 LED
dimensions: 10.08 m x 2.88 m
resolution: 3840 x 1080 Pixel
- Hire Charge** 15,290.00 EUR for an exclusive 30 sec. spot within a loop with organiser content
The content has to be delivered by the exhibitor.
- Status** Availability upon request.



CATERING AREA – INDOORS



4 Balustrade Graphics at the Stairs in the Catering Area, each 2-sided

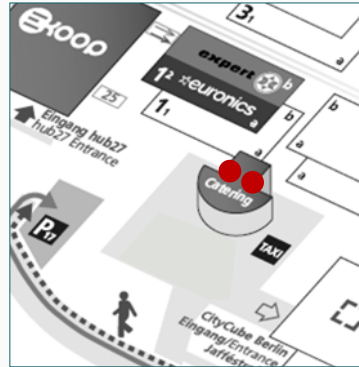
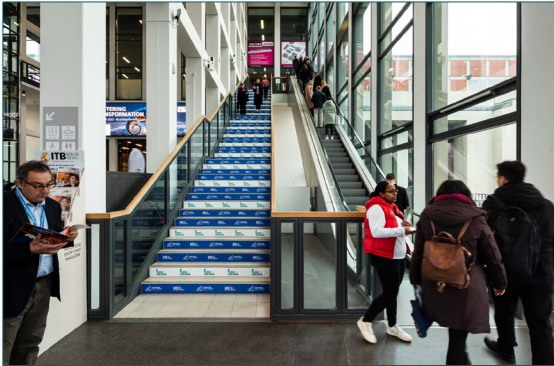
Location 2 stairs with 4 segmented rails in the Catering Area on the left and right hand side (see red marks on the photo) leading to the Passageway to the Retailer Hall

Size The stencils will be gladly provided separately.

Hire Charge 5,370.00 EUR for both stairs, i.e. for 4 stair-rail graphics

Production/ Installation on demand (depending on technical implementation)

Status Availability upon request.



120 Step Graphics at the Stairs in the Catering Area

Location 2 stairs with 120 steps in the Catering Area on the left and right hand side leading to the Passageway to the Retailer Hall

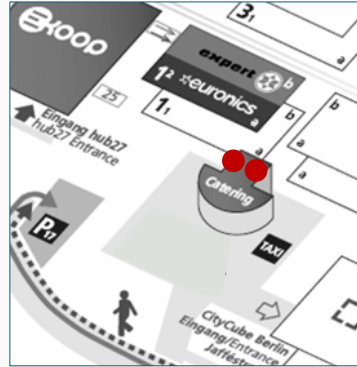
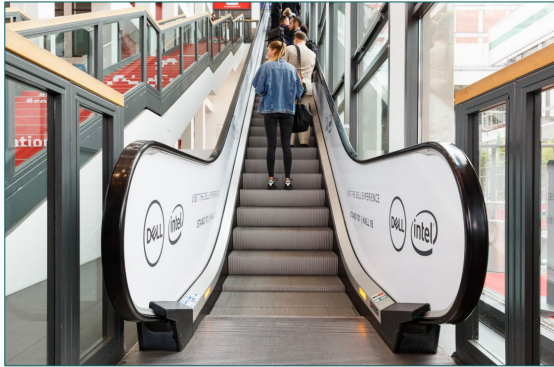
Size (w x h) 1.83 m x 0.135 m per step graphic (60 step graphics per stair)

Hire Charge 7,675.00 EUR for both stairs, i.e. for 120 step graphics in total

Production/ Installation 2,880.00 EUR for both stairs, i.e. for 120 step graphics in total

Status Availability upon request.

CATERING AREA – INDOORS



4 Balustrade Graphics at Escalators

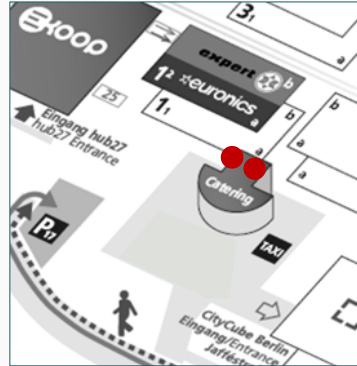
Location 2 escalators with 4 balustrades in the Catering Area on the left and right hand side leading to the Passageway to the Retailer Hall

Size approx. 128.00 m² for all 4 balustrade graphics [2-sided]

Hire Charge 8,400.00 EUR for both escalators,
i.e. for 4 balustrade graphics in total

Production/ Installation 10,775.00 EUR for both escalators,
i.e. for 4 balustrade graphic in total [each 2-sided]

Status Availability upon request.



8 Window Brandings in the Catering Area on the upper level

Location at the access area to Hall 1.2 coming from the Catering Area via the escalators and stairs on the left and right hand side:
8 brandings can be fixed on 4 windows on the front and back sides.

Size 2.34 m x 2.35 m per window cling
(8 brandings in total)

Hire Charge 3,385.00 EUR per branding

Production/ Installation 1,130.00 EUR per branding

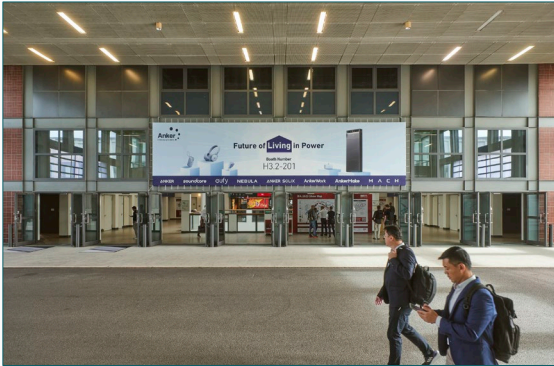
Status Availability upon request.

PASSAGEWAY TO RETAILERS HALL – INDOORS



Option A: 1 Entrance Banner to the Foyer of Hall 1.2 a

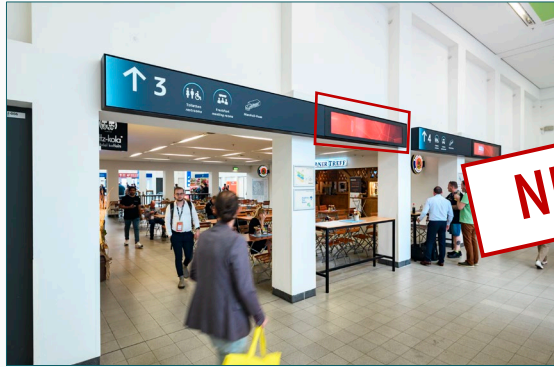
Location	above the entrance doors to the foyer of Hall 1.2 a leading to the Retailer Hall
Size	24.00 m x 3.00 m
Hire Charge	7,015.00 EUR
Production/Installation	4,090.00 EUR
Status	Availability upon request.



Option B: 1 Entrance Banner to the Foyer of Hall 1.2 a

Location	small version above the entrance doors to the foyer of Hall 1.2 a leading to the Retailer Hall
Size	12.00 m x 3.00 m
Hire Charge	3,510.00 EUR
Production/Installation	2,650.00 EUR
Status	Availability upon request.

ENTRANCE AREA RETAILER HALL – INDOORS



Up to 4 UltraStretched Displays GUIDING SYSTEM CENTRAL

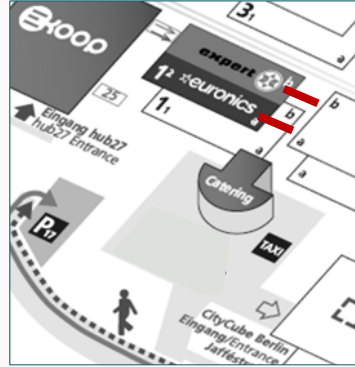
- Location** in the foyer of Hall 1.2 – visible coming from the Catering area
- Technical Specs** UltraStretched Displays in the GUIDING SYSTEM CENTRAL
size: 2158 x 348mm
display 1 x 3840 x 2160 Pixel or 2 x 1920 x 1080Pixel side by side
- Special Combi Price** on demand
- Status** **Availability upon request**



Up to 4 UltraStretched Displays GUIDING SYSTEM HALL ENTRANCES

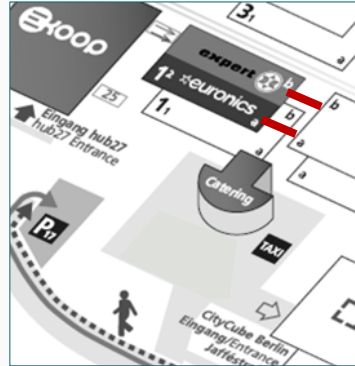
- Location** in the foyers of Hall 1.2 a and b, directly in the GUIDING SYSTEM above the entrances to the Retailers Hall 1.2 a and b
- Technical Specs** UltraStretched Displays in the GUIDING SYSTEM HALL ENTRANCES
size: 2158 x 348mm
display 1 x 3840 x 2160 Pixel or 2 x 1920 x 1080Pixel side by side
- Special Combi Price** on demand
- Status** **Availability upon request.**

ENTRANCE AREA RETAILER HALL – INDOORS



Option A: Hanging Banners in the Foyers of Hall 1.2 a and b, each 2-sided

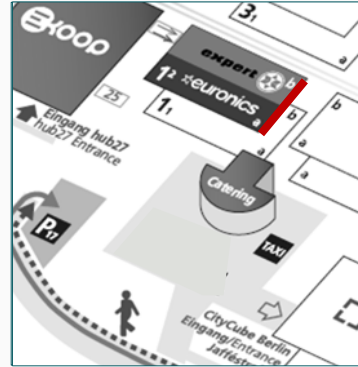
- Location** in the middle foyers of Hall 1.2 a and b, directly above the escalators and staircases coming from the Catering Area
- Size (w x h)** 9.00 m x 3.00 m per double-sided banner (print on front and back side)
- Hire Charge** 6,300.00 EUR per double-sided banner
- Production/Installation** 2,565.00 EUR per double-sided banner
- Status** Availability upon request.



Option B: Hanging Banners in the Foyers of Hall 1.2 a and b, each 2-sided

- Location** in the foyers of Hall 1.2 a and b directly above the escalators and staircases coming from the Catering Area
- Size (w x h)** 2.00 m x 3.00 m per double-sided banner (print on front and back side)
- Hire Charge** 1,705.00 EUR per double-sided banner
- Production/Installation** 405.00 EUR per double-sided banner
- Status** Availability upon request.

ENTRANCE AREA RETAILER HALL – INDOORS



Option A: Entrance Banners at Hall 1.2 a and b

Location above the entrances to Hall 1.2 a and b

Size (w x h) 2.00 m x 2.00 m per banner

Hire Charge 535.00 EUR per banner

Production/ Installation 335.00 EUR per banner

Status Availability upon request.



Option B: Entrance Brandings at Hall 1.2 a and b

Location above and next to the entrances of Hall 1.2 a and b

Size (w x h) 1 entrance branding consists of:
1 horizontal banner with approx. 23.40 m x 2.52 m
2 lateral banners on the left and right with approx. 2.50 m x 2.52 m each

Hire Charge 7,075.00 EUR for the complete entrance branding

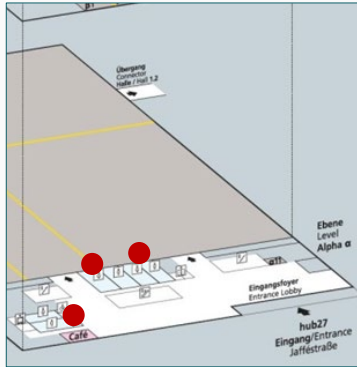
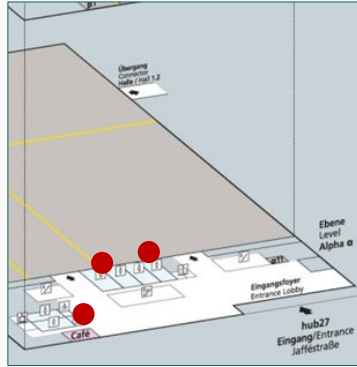
Production/ Installation 7,870.00 EUR for the complete entrance branding

Status Availability upon request.

SANITARY FACILITIES ADVERTISING



SANITARY FACILITIES ADVERTISING



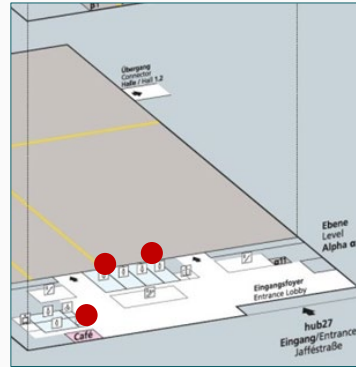
Mirror Graphics in the Sanitary Facilities

- Location** high-quality stickers with your individual design on the mirrors in the lavatories (exact positions by arrangement)
- Size (w x h)** e.g. 0.30 m x 0.15 m per graphic
Other formats on demand.
- Hire Charge** e.g. 418.00 EUR
for 42 mirror graphics (exact quantity will be defined at a later date)
- Production/ Installation** e.g. 805.00 EUR
for 42 mirror graphics
- Status** **Availability upon request.**

Branding of Towel Dispensers in the Sanitary Facilities

- Location** high-quality stickers with your individual design on the towel dispensers in the lavatories
- Size (w x h)** e.g. 0.30 m x 0.15 m per sticker
Other formats and special shapes are possible.
- Hire Charge** e.g. 120.00 EUR
for 12 towel dispensers (exact quantity will be defined at a later date)
- Production/ Installation** e.g. 230.00 EUR
for 12 towel dispensers
- Status** **Availability upon request.**

SANITARY FACILITIES ADVERTISING



Door Brandings in the Sanitary Facilities

Location high-quality stickers with your individual design on the doors (outside) in the lavatories as well as in the toilets

Size (w x h) e.g. DIN A4 (0.210 m x 0.297 m) per sticker
Other formats and special shapes are possible.

Hire Charge 1,896.00 EUR for 72 stickers (exact quantity will be defined at a later date)

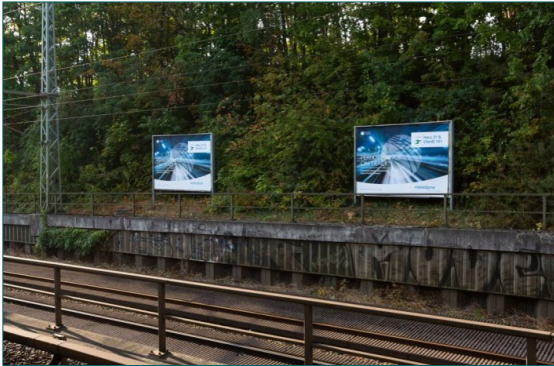
Production/Installation 864.00 EUR for 72 stickers

Status Availability upon request.

OUT-OF-HOME ADVERTISING PUBLIC TRANSPORT "MESSE SÜD"



PUBLIC TRANSPORT “MESSE SÜD”



Ground Posters / Floor Graphics

Description positions by arrangement directly on the platform and in the entrance / exit areas of the station, minimum booking period: 1 week

Size (w x h) 1.20 m x 1.80 m per graphic

Hire Charge on demand

Production/ Installation on demand

Status Availability upon request.

2 Billboards at the Station, unlighted

Description 2 billboards directly at the station, minimum booking period: 10 days

Size (w x h) approx. 3.56 m x 2.52 m per billboard (18/1)

Hire Charge on demand

Production/ Installation on demand

Status Availability upon request.

GET IN TOUCH WITH OUR EXPERIENCED MARKETING TEAM...

...WHO ALWAYS BRINGS THE SPOTLIGHT ON YOU!

Give us a call or write us an e-mail:

phone: +49(0)30 3038-2525

e-mail: advertising@messe-berlin.de

LET'S BOOST YOUR VISIBILITY BEYOND YOUR BOOTH!



Emily Frieden
Junior Marketing Manager

Luis Humpert
Junior Marketing Manager

Tuba Ipek
Senior Marketing Manager

Lilith Strebl-Schneider
Marketing Director

Gudrun Mehlhase
Senior Marketing Manager

Kristina Bendler
Senior Marketing Manager

Leopold Benecke
Junior Marketing Manager